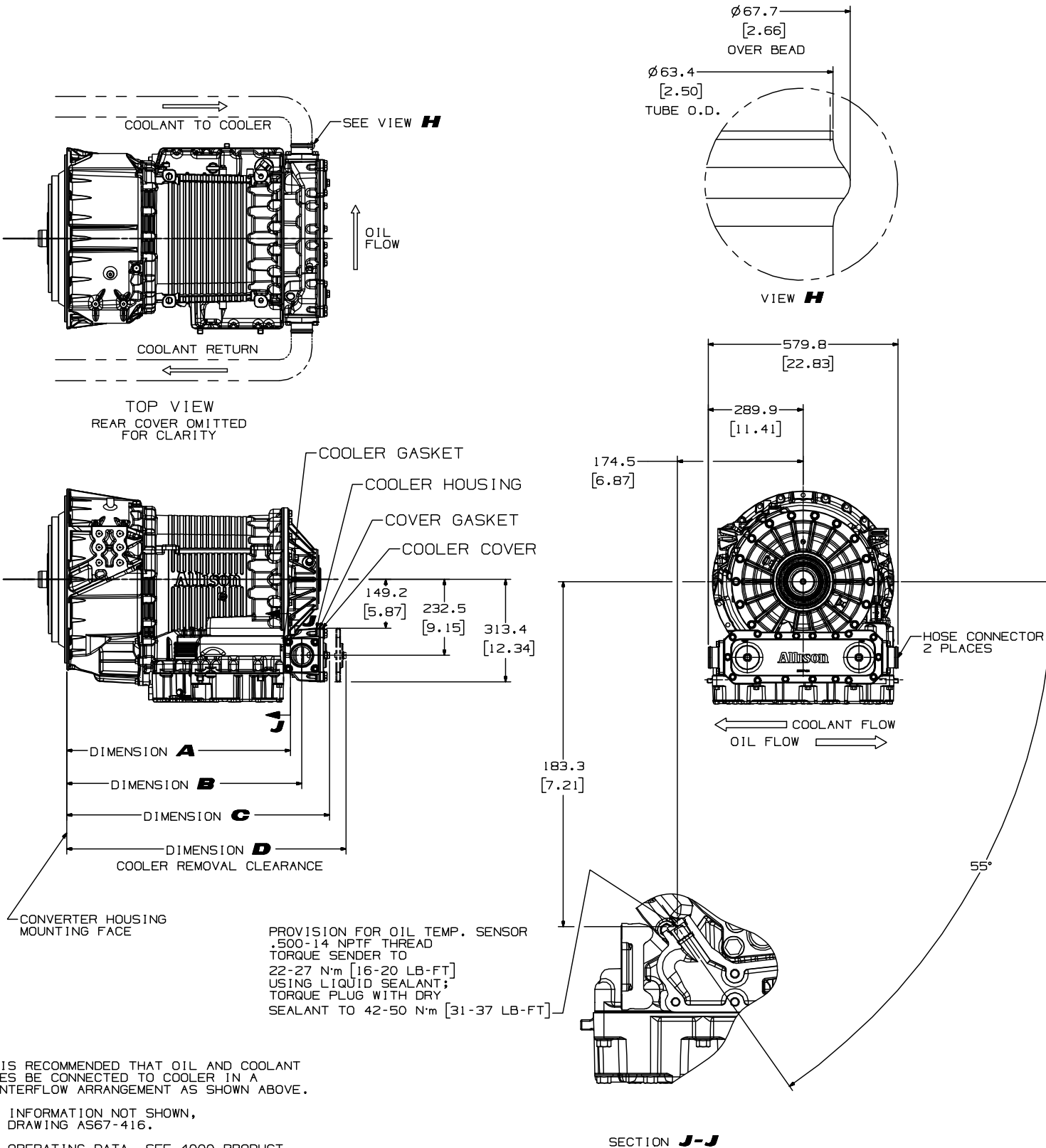


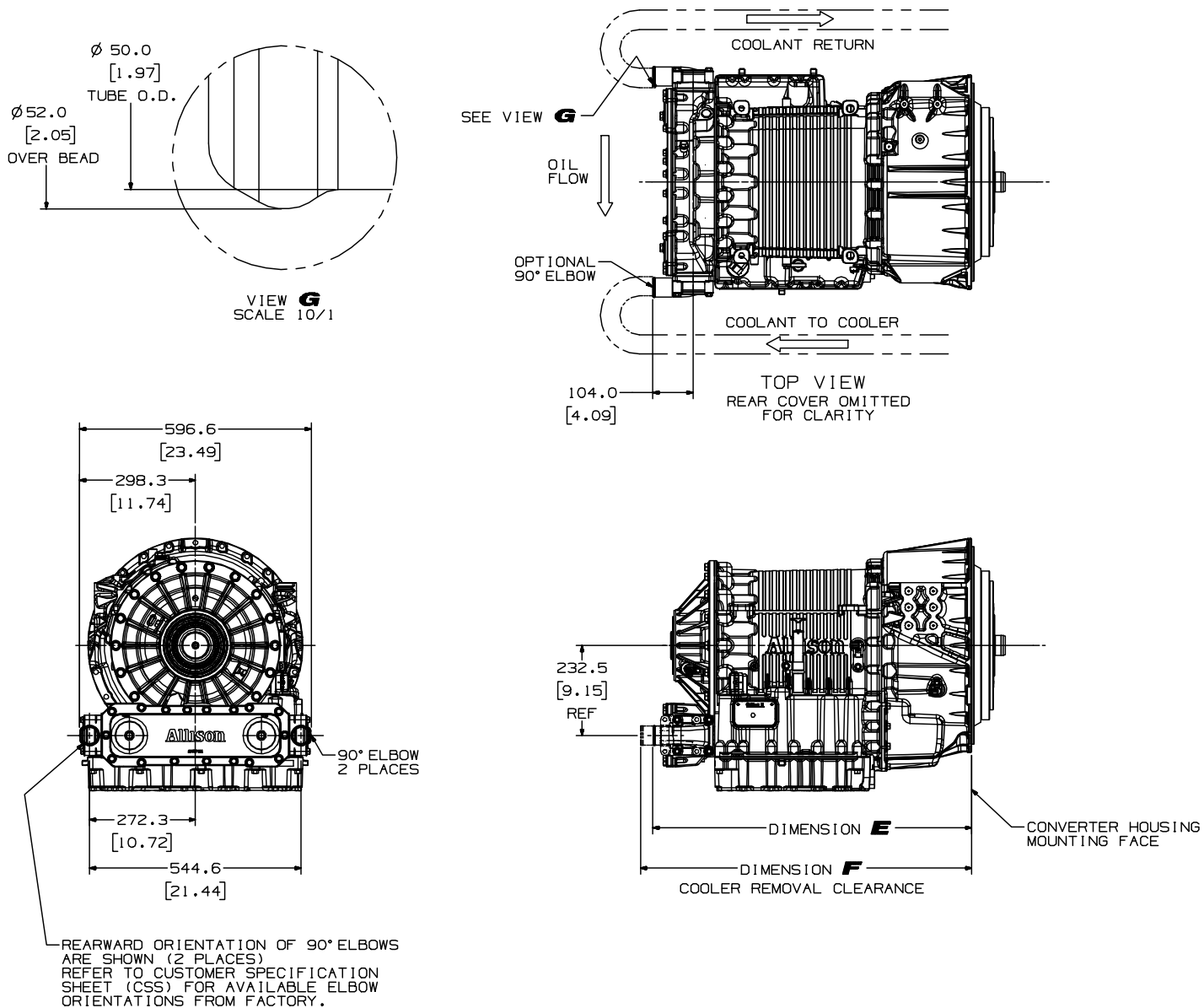
TRANSMISSION CONFIGURATION	DIMENSION <b>A</b>	DIMENSION <b>B</b>	DIMENSION <b>C</b>	DIMENSION <b>D</b>	DIMENSION <b>E</b>	DIMENSION <b>F</b>
6-SPEED NO PTO	683.6 (26.91)	717.6 (28.25)	802.6 (31.60)	853.1 (33.59)	820.3 (32.30)	853.1 (33.59)
6-SPEED WITH PTO	756.6 (29.88)	790.6 (31.13)	875.6 (34.47)	926.1 (36.46)	893.3 (35.17)	926.1 (36.46)
7-SPEED NO PTO	N/A	N/A	N/A	N/A	N/A	N/A
7-SPEED WITH PTO	N/A	N/A	N/A	N/A	N/A	N/A

STANDARD - CAPACITY COOLER

STRAIGHT FITTING CONFIGURATION



90° ELBOW CONFIGURATION



NOTE:  
IT IS RECOMMENDED THAT OIL AND COOLANT LINES BE CONNECTED TO COOLER IN A COUNTERFLOW ARRANGEMENT AS SHOWN ABOVE.  
FOR INFORMATION NOT SHOWN, SEE DRAWING AS67-416.  
FOR OPERATING DATA, SEE 4000 PRODUCT FAMILY TRANSMISSION DATA.  
PARTS SHOWN IN PHANTOM ARE SUPPLIED AND INSTALLED BY THE VEHICLE BUILDER.

DIMENSIONS SHOWN IN PARENTHESES ARE IN INCHES, AND FOR REFERENCE ONLY

FR1 DWG. NO. AS67-470

NX	FR2	SPECIFIED DIMENSIONS HAVE PRECEDENCE OVER COMPUTER GENERATED DATA.	
		CHANGE RESTRICTED	
THIRD ANGLE		METRIC	
THE INFORMATION CONTAINED HEREIN IS PROPRIETARY AND THE PROPERTY OF ALLISON TRANSMISSION, INC. AND MAY NOT BE REPRODUCED, DISCLOSED OR USED FOR ANY PURPOSE OTHER THAN A QUOTATION TO OR ON ORDER FROM ALLISON TRANSMISSION, INC. WITHOUT THE SPECIFIC WRITTEN AUTHORIZATION OF ALLISON TRANSMISSION, INC.			

H	(1) UPDATED TO THE LATEST CONVERTER HSG HARDWARE	18JN18	RHJC
G	(1) UPDATED TO LATEST BREATHING HARDWARE (2) REVISED COOLANT AND OIL FLOW ARROWS IN STRAIGHT FITTING CONFIGURATION (3) SEE SHEET 2	04MY17	RHJC
F	REDRAWN WITH CHANGE (1) ADDED SECTION J-J AND RELATED INFO (2) 29556164 WAS 29557124 - COOLER HSG COVER (3) SEE SHEET 2	08D16	RHJC
REV	DESCRIPTION	DATE	CHK
1	11AUG04	11AUG04	
2	17AUG04	17AUG04	
3	17AUG04	17AUG04	
4	17AUG04	17AUG04	
5	17AUG04	17AUG04	
6	17AUG04	17AUG04	
7	17AUG04	17AUG04	
8	17AUG04	17AUG04	
9	17AUG04	17AUG04	
10	17AUG04	17AUG04	
11	17AUG04	17AUG04	
12	17AUG04	17AUG04	
13	17AUG04	17AUG04	
14	17AUG04	17AUG04	
15	17AUG04	17AUG04	
16	17AUG04	17AUG04	
17	17AUG04	17AUG04	
18	17AUG04	17AUG04	
19	17AUG04	17AUG04	
20	17AUG04	17AUG04	
21	17AUG04	17AUG04	
22	17AUG04	17AUG04	
23	17AUG04	17AUG04	
24	17AUG04	17AUG04	
25	17AUG04	17AUG04	
26	17AUG04	17AUG04	
27	17AUG04	17AUG04	
28	17AUG04	17AUG04	
29	17AUG04	17AUG04	
30	17AUG04	17AUG04	
31	17AUG04	17AUG04	
32	17AUG04	17AUG04	
33	17AUG04	17AUG04	
34	17AUG04	17AUG04	
35	17AUG04	17AUG04	
36	17AUG04	17AUG04	
37	17AUG04	17AUG04	
38	17AUG04	17AUG04	
39	17AUG04	17AUG04	
40	17AUG04	17AUG04	
41	17AUG04	17AUG04	
42	17AUG04	17AUG04	
43	17AUG04	17AUG04	
44	17AUG04	17AUG04	
45	17AUG04	17AUG04	
46	17AUG04	17AUG04	
47	17AUG04	17AUG04	
48	17AUG04	17AUG04	
49	17AUG04	17AUG04	
50	17AUG04	17AUG04	
51	17AUG04	17AUG04	
52	17AUG04	17AUG04	
53	17AUG04	17AUG04	
54	17AUG04	17AUG04	
55	17AUG04	17AUG04	
56	17AUG04	17AUG04	
57	17AUG04	17AUG04	
58	17AUG04	17AUG04	
59	17AUG04	17AUG04	
60	17AUG04	17AUG04	
61	17AUG04	17AUG04	
62	17AUG04	17AUG04	
63	17AUG04	17AUG04	
64	17AUG04	17AUG04	
65	17AUG04	17AUG04	
66	17AUG04	17AUG04	
67	17AUG04	17AUG04	
68	17AUG04	17AUG04	
69	17AUG04	17AUG04	
70	17AUG04	17AUG04	
71	17AUG04	17AUG04	
72	17AUG04	17AUG04	
73	17AUG04	17AUG04	
74	17AUG04	17AUG04	
75	17AUG04	17AUG04	
76	17AUG04	17AUG04	
77	17AUG04	17AUG04	
78	17AUG04	17AUG04	
79	17AUG04	17AUG04	
80	17AUG04	17AUG04	
81	17AUG04	17AUG04	
82	17AUG04	17AUG04	
83	17AUG04	17AUG04	
84	17AUG04	17AUG04	
85	17AUG04	17AUG04	
86	17AUG04	17AUG04	
87	17AUG04	17AUG04	
88	17AUG04	17AUG04	
89	17AUG04	17AUG04	
90	17AUG04	17AUG04	
91	17AUG04	17AUG04	
92	17AUG04	17AUG04	
93	17AUG04	17AUG04	
94	17AUG04	17AUG04	
95	17AUG04	17AUG04	
96	17AUG04	17AUG04	
97	17AUG04	17AUG04	
98	17AUG04	17AUG04	
99	17AUG04	17AUG04	
100	17AUG04	17AUG04	

